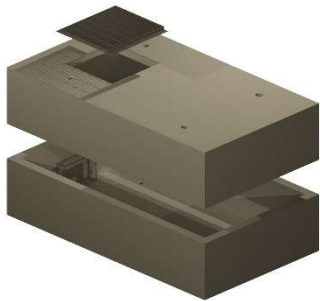


# HUDSON CIVIL PRODUCTS

## 4000 L Detention Tank

### Product Overview

The Hudson Civil Products 4000L Detention Tank is a precast reinforced concrete solution designed for stormwater flow control. Tanks can be linked for larger detention volumes, supporting scalable stormwater management.



### Installation & Performance

- Designed for in-situ driveway slab with epoxy-sealed joints
- Full perimeter burial and even loading required
- Minimum soil bearing capacity: 160 kPa
- Cure 7–28 days before applying traffic loads
- Anti-buoyancy design required for high water table sites

### Key Specifications

Specification	Details
Capacity	4000 Litres.
Material	Precast 40 MPa reinforced concrete.
Dimensions	Internal: 2310–2250 mm x 1260 - 1200, External: 2480 mm x 1435 mm, Max Depth: 1640 mm.
Mass	2375 kg per tank section. (top and bottom unit weight varies as per standard design)
Lifting	4 × 2.5 t swift lift anchors per segment.
Load Testing	112 KN proof load, 240 KN ultimate load.
Hydraulic Performance	4000 L detention volume, scalable by linking multiple tanks.

### ULTIMATE LIMIT STATE DESIGN LOAD:

- Class D Access cover to AS 3996-2019 = 240 KN
- W 80 Wheel Loading to AS 5100.2 = 210 KN Concentrated Load
- Allowance for Supporting and placing fill over units' depth range 200 mm to 600 mm

### Advantages

- Precast for fast, low-cost installation
- Factory load-tested for strength and durability
- Traffic-rated for driveways (Class D as per AS 3996)
- Compatible with GPTs and stormwater systems

**Distributed by: Hudson Civil Products**

**Contact: [sales@hudsoncivil.com.au](mailto:sales@hudsoncivil.com.au) | [www.hudsoncivil.com.au](http://www.hudsoncivil.com.au)**