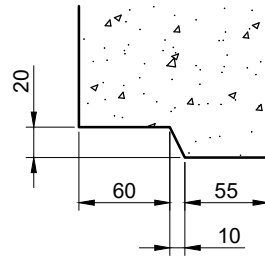


**TOP REBATE**

SCALE 1:5

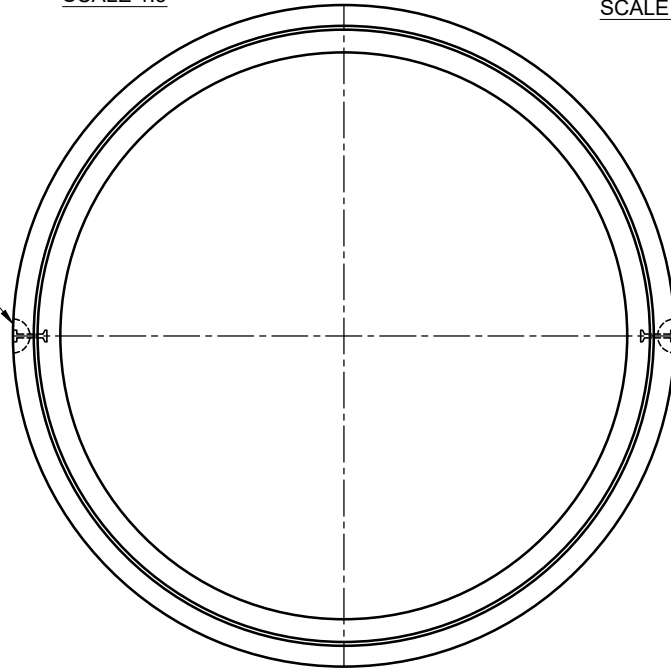


**BOTTOM REBATE**

SCALE 1:5

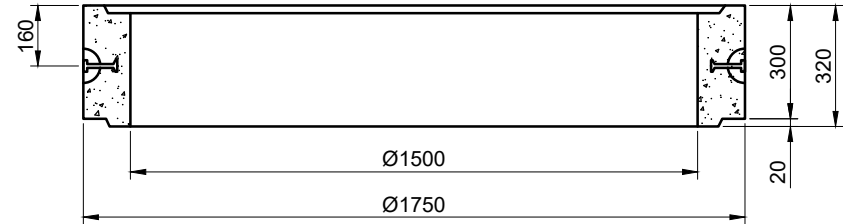
INFORMATION TABLE	
CONCRETE TYPE	MINIMUM N40
CONCRETE VOLUME	0.20m <sup>3</sup>
CONCRETE COVER	30mm MINIMUM
LIFTER TYPE & QTY	2 - 5.0T x 90 FOOT ANCHOR
MASS	490KG
ITEM NO/ID	

2 - 5.0T x 90 LONG SWIFTLIFT FOOT ANCHORS



**PLAN VIEW**

NOT ALL DETAILS SHOWN FOR CLARITY



**SECTION A**

NOT ALL DETAILS SHOWN FOR CLARITY

**NOTES:**

1. MANUFACTURED FROM MINIMUM N40 CONCRETE
2. REINFORCEMENT AS PER HCP STANDARD DESIGN
3. CONCRETE COVER & CONCRETE STRENGTH VARIES FOR SPECIFIC APPLICATIONS
4. ALL DIMENSIONS ARE SHOWN NOMINAL AND MAY VARY BETWEEN CASTING FACILITIES WITH DIFFERENCES IN MANUFACTURING MOULDS AND PRACTICES

**DISCLAIMER:**  
 SHOP DRAWING ONLY, DESIGN BY OTHERS. SITE CONTRACTOR & INSTALLER MUST UNDERTAKE SITE & PROJECT SPECIFIC RISK ASSESSMENT/SWMS AROUND SAFE LIFTING & HANDLING OF PRODUCT

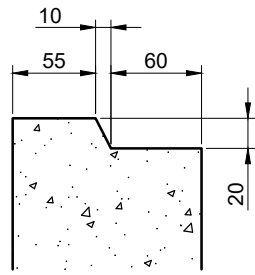
**CP23403 - STANDARD DN1500 x 300  
 MANHOLE SHAFT**

REV	AMENDMENTS	DRAWN	DATE	APPR.	NOTES	SCALE	PAPER
0	NEW PRODUCT DRAWING	M.R.	03/06/21	A.H.	STANDARD PRODUCT DRAWING	1:20	A4
						JOB NUMBER	DRAWING
					DRAWN M.R.	CHECKED A.H.	DATE 03 JUNE 2021
							FAC-MH1500-03C



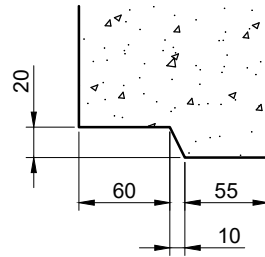
**HUDSON**  
 CIVIL PRODUCTS





**TOP REBATE**

SCALE 1:5

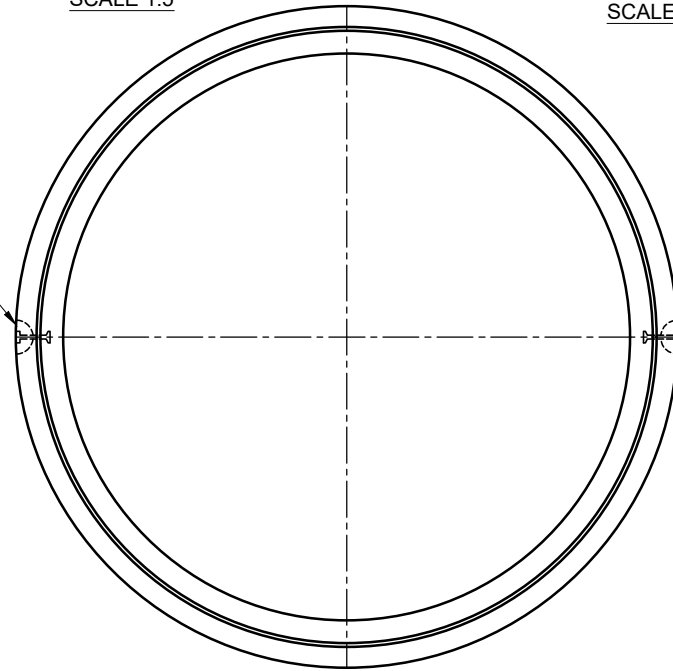


**BOTTOM REBATE**

SCALE 1:5

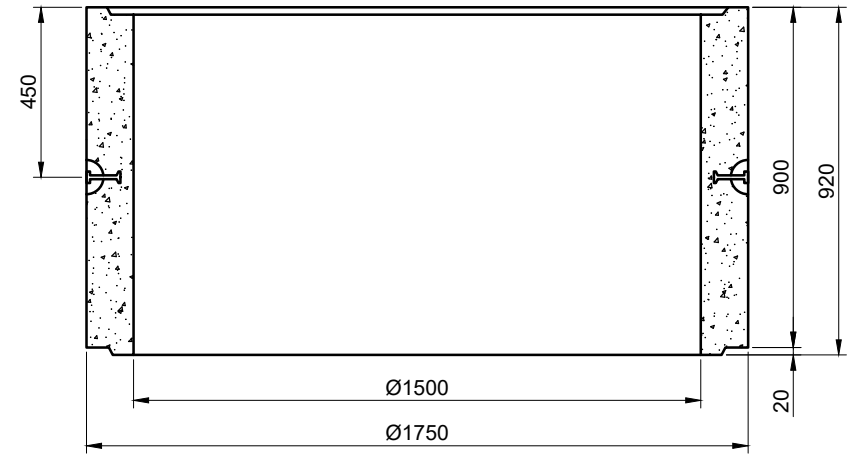
INFORMATION TABLE	
CONCRETE TYPE	MINIMUM N40
CONCRETE VOLUME	0.59m <sup>3</sup>
CONCRETE COVER	30mm MINIMUM
LIFTER TYPE & QTY	2 - 5.0T x 90 FOOT ANCHOR
MASS	1470KG
ITEM NO/ID	

2 - 5.0T x 90 LONG SWIFTLIFT FOOT ANCHORS



**PLAN VIEW**

NOT ALL DETAILS SHOWN FOR CLARITY



**SECTION A**

NOT ALL DETAILS SHOWN FOR CLARITY

**NOTES:**

1. MANUFACTURED FROM MINIMUM N40 CONCRETE
2. REINFORCEMENT AS PER HCP STANDARD DESIGN
3. CONCRETE COVER & CONCRETE STRENGTH VARIES FOR SPECIFIC APPLICATIONS
4. ALL DIMENSIONS ARE SHOWN NOMINAL AND MAY VARY BETWEEN CASTING FACILITIES WITH DIFFERENCES IN MANUFACTURING MOULDS AND PRACTICES

**DISCLAIMER:**  
 SHOP DRAWING ONLY, DESIGN BY OTHERS. SITE CONTRACTOR & INSTALLER MUST UNDERTAKE SITE & PROJECT SPECIFIC RISK ASSESSMENT/SWMS AROUND SAFE LIFTING & HANDLING OF PRODUCT

**CP23409 - STANDARD DN1500 x 900  
 MANHOLE SHAFT**

REV	AMENDMENTS	DRAWN	DATE	APPR.	NOTES	SCALE	PAPER
0	NEW PRODUCT DRAWING	M.R.	03/06/21	A.H.	STANDARD PRODUCT DRAWING	1:20	A4
						JOB NUMBER	DRAWING
					DRAWN M.R.	CHECKED A.H.	DATE 03 JUNE 2021
							FAC-MH1500-09C



**HUDSON**  
 CIVIL PRODUCTS













