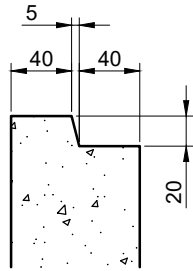
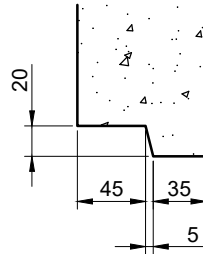


### INFORMATION TABLE

CONCRETE TYPE	MINIMUM N40
CONCRETE VOLUME	0.10m <sup>3</sup>
CONCRETE COVER	30mm MINIMUM
LIFTER TYPE & QTY	2 - 2.5T x 55 FOOT ANCHOR
MASS	250KG
ITEM NO/ID	

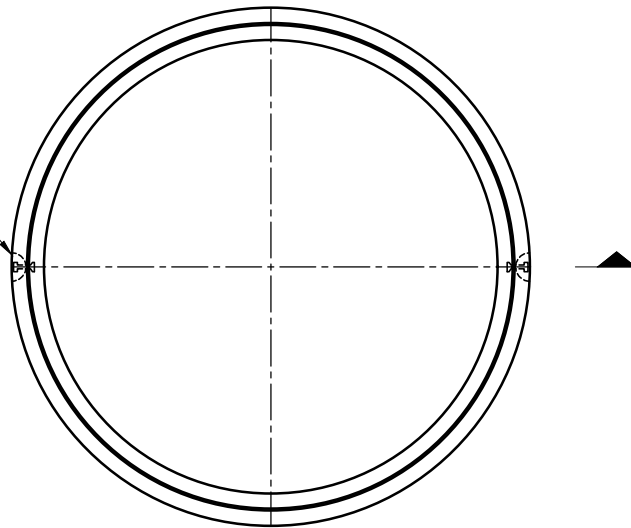


**TOP REBATE**  
SCALE 1:5

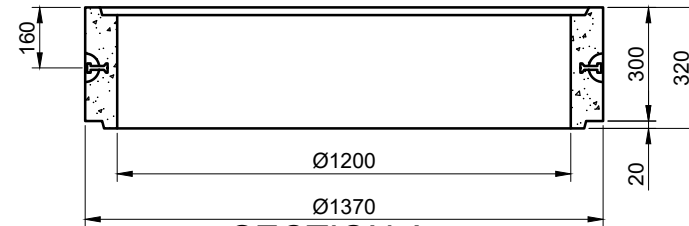


**BOTTOM REBATE**  
SCALE 1:5

2 - 2.5T x 55 LONG SWIFTLIFT FOOT ANCHORS



**PLAN VIEW**  
NOT ALL DETAILS SHOWN FOR CLARITY



**SECTION A**  
NOT ALL DETAILS SHOWN FOR CLARITY

**NOTES:**

1. MANUFACTURED FROM MINIMUM N40 CONCRETE
2. REINFORCEMENT AS PER HCP STANDARD DESIGN
3. CONCRETE COVER & CONCRETE STRENGTH VARIES FOR SPECIFIC APPLICATIONS
4. ALL DIMENSIONS ARE SHOWN NOMINAL AND MAY VARY BETWEEN CASTING FACILITIES WITH DIFFERENCES IN MANUFACTURING MOULDS AND PRACTICES

**DISCLAIMER:**  
SHOP DRAWING ONLY, DESIGN BY OTHERS. SITE CONTRACTOR & INSTALLER MUST UNDERTAKE SITE & PROJECT SPECIFIC RISK ASSESSMENT/SWMS AROUND SAFE LIFTING & HANDLING OF PRODUCT

**CP23303 - STANDARD DN1200 x 300  
MANHOLE SHAFT**

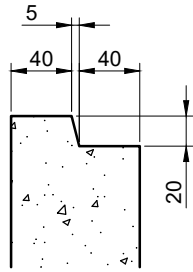
REV	AMENDMENTS	DRAWN	DATE	APPR.	NOTES	SCALE	PAPER
0	NEW PRODUCT DRAWING	M.R.	03/06/21	A.H.	STANDARD PRODUCT DRAWING	1:20	A4
						JOB NUMBER	DRAWING
					DRAWN M.R.	CHECKED A.H.	DATE 03 JUNE 2021
							FAC-MH1200-03C



**HUDSON**  
CIVIL PRODUCTS

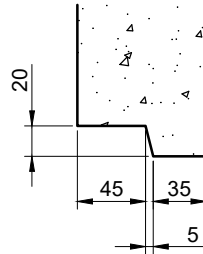
### INFORMATION TABLE

CONCRETE TYPE	MINIMUM N40
CONCRETE VOLUME	0.20m <sup>3</sup>
CONCRETE COVER	30mm MINIMUM
LIFTER TYPE & QTY	2 - 2.5T x 55 FOOT ANCHOR
MASS	500KG
ITEM NO/ID	



**TOP REBATE**

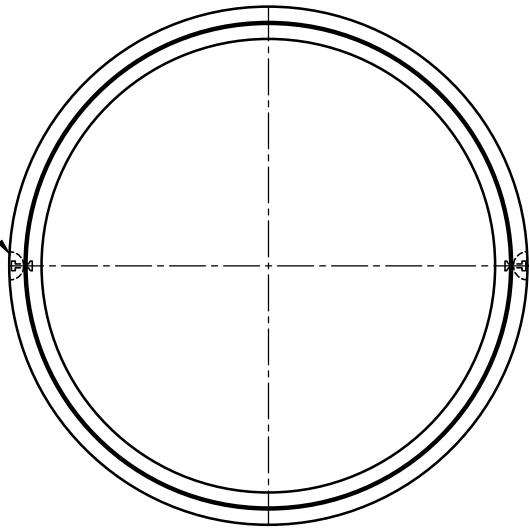
SCALE 1:5



**BOTTOM REBATE**

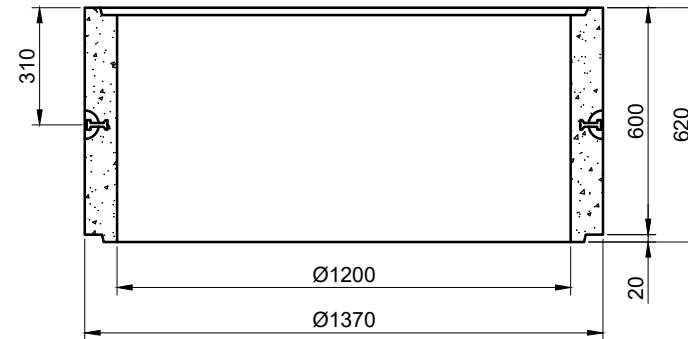
SCALE 1:5

2 - 2.5T x 55 LONG  
SWIFTLIFT  
FOOT ANCHORS



**PLAN VIEW**

NOT ALL DETAILS SHOWN FOR CLARITY



**SECTION A**

NOT ALL DETAILS SHOWN FOR CLARITY

**NOTES:**

1. MANUFACTURED FROM MINIMUM N40 CONCRETE
2. REINFORCEMENT AS PER HCP STANDARD DESIGN
3. CONCRETE COVER & CONCRETE STRENGTH VARIES FOR SPECIFIC APPLICATIONS
4. ALL DIMENSIONS ARE SHOWN NOMINAL AND MAY VARY BETWEEN CASTING FACILITIES WITH DIFFERENCES IN MANUFACTURING MOULDS AND PRACTICES

**DISCLAIMER:**

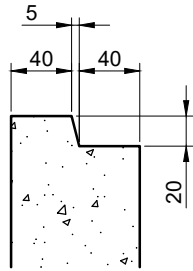
SHOP DRAWING ONLY, DESIGN BY OTHERS. SITE CONTRACTOR & INSTALLER MUST UNDERTAKE SITE & PROJECT SPECIFIC RISK ASSESSMENT/SWMS AROUND SAFE LIFTING & HANDLING OF PRODUCT

**CP23306 - STANDARD DN1200 x 600  
MANHOLE SHAFT**

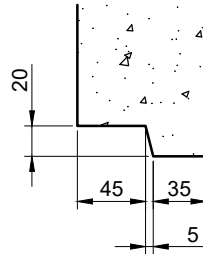
REV	AMENDMENTS	DRAWN	DATE	APPR.	NOTES	SCALE	PAPER
0	NEW PRODUCT DRAWING	M.R.	03/06/21	A.H.	STANDARD PRODUCT DRAWING	1:20	A4
						JOB NUMBER	DRAWING
					DRAWN		
					CHECKED		
					DATE		
					M.R.	A.H.	03 JUNE 2021
					FAC-MH1200-06C		



**HUDSON**  
CIVIL PRODUCTS



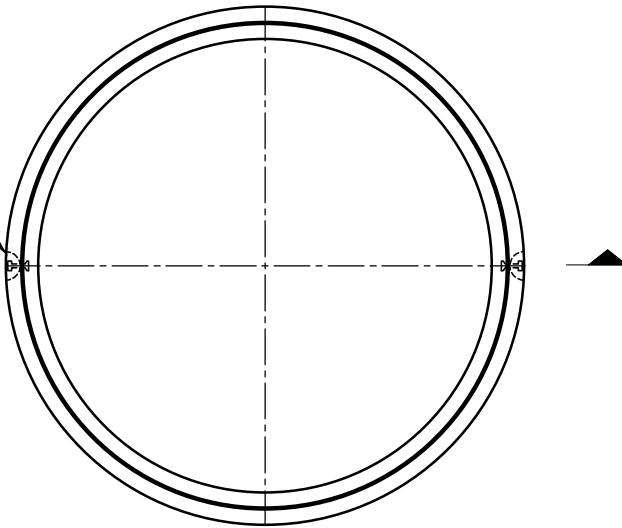
**TOP REBATE**  
SCALE 1:5



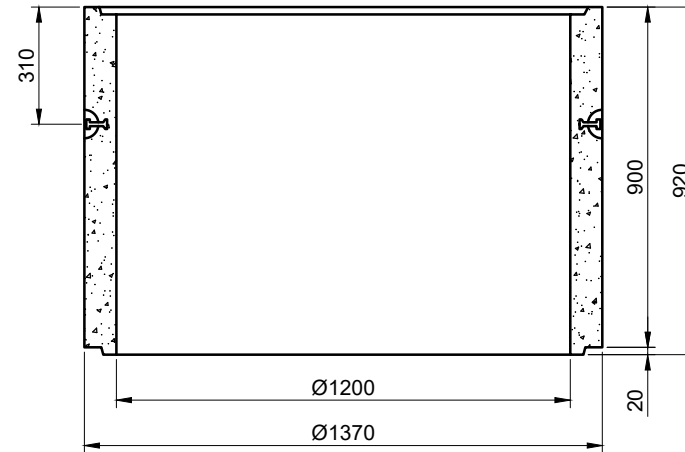
**BOTTOM REBATE**  
SCALE 1:5

INFORMATION TABLE	
CONCRETE TYPE	MINIMUM N40
CONCRETE VOLUME	0.30m <sup>3</sup>
CONCRETE COVER	30mm MINIMUM
LIFTER TYPE & QTY	2 - 2.5T x 55 FOOT ANCHOR
MASS	750KG
ITEM NO/ID	

2 - 2.5T x 55 LONG SWIFTLIFT FOOT ANCHORS



**PLAN VIEW**  
NOT ALL DETAILS SHOWN FOR CLARITY



**SECTION A**  
NOT ALL DETAILS SHOWN FOR CLARITY

**NOTES:**

1. MANUFACTURED FROM MINIMUM N40 CONCRETE
2. REINFORCEMENT AS PER HCP STANDARD DESIGN
3. CONCRETE COVER & CONCRETE STRENGTH VARIES FOR SPECIFIC APPLICATIONS
4. ALL DIMENSIONS ARE SHOWN NOMINAL AND MAY VARY BETWEEN CASTING FACILITIES WITH DIFFERENCES IN MANUFACTURING MOULDS AND PRACTICES

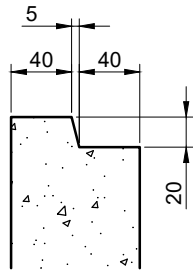
**DISCLAIMER:**  
SHOP DRAWING ONLY, DESIGN BY OTHERS. SITE CONTRACTOR & INSTALLER MUST UNDERTAKE SITE & PROJECT SPECIFIC RISK ASSESSMENT/SWMS AROUND SAFE LIFTING & HANDLING OF PRODUCT

**CP23309 - STANDARD DN1200 x 900  
MANHOLE SHAFT**

REV	AMENDMENTS	DRAWN	DATE	APPR.	NOTES	SCALE	PAPER
0	NEW PRODUCT DRAWING	M.R.	03/06/21	A.H.	STANDARD PRODUCT DRAWING	1:20	A4
						JOB NUMBER	DRAWING
					DRAWN M.R.	CHECKED A.H.	DATE 03 JUNE 2021
							FAC-MH1200-09C

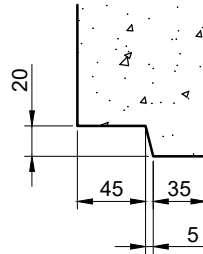


**HUDSON**  
CIVIL PRODUCTS



**TOP REBATE**

SCALE 1:5

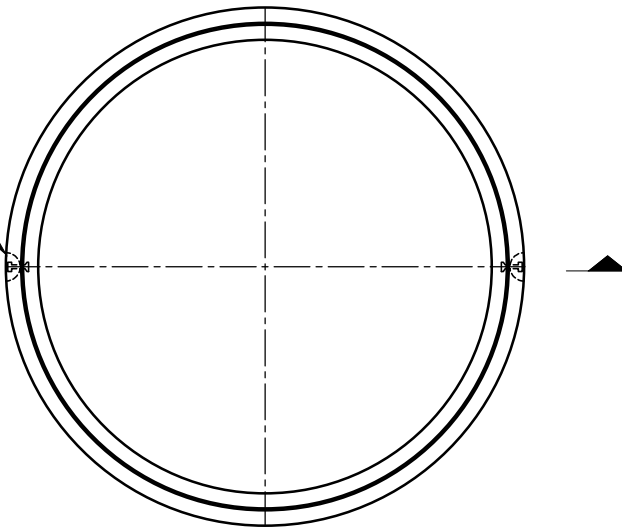


**BOTTOM REBATE**

SCALE 1:5

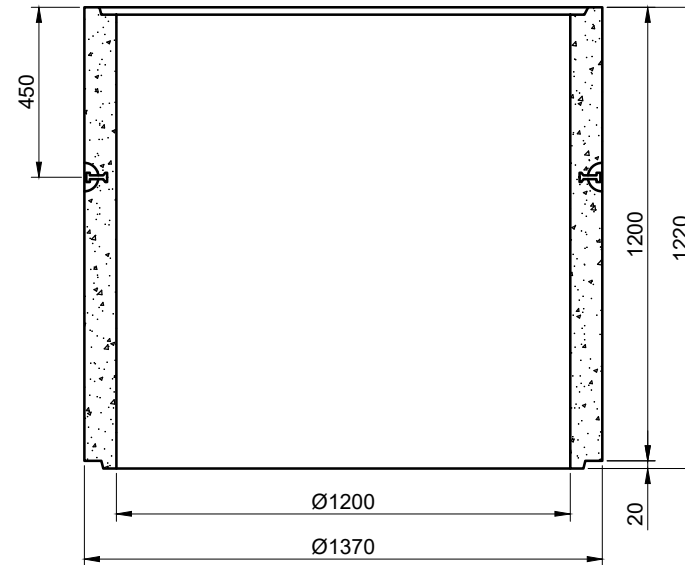
INFORMATION TABLE	
CONCRETE TYPE	MINIMUM N40
CONCRETE VOLUME	0.40m <sup>3</sup>
CONCRETE COVER	30mm MINIMUM
LIFTER TYPE & QTY	2 - 2.5T x 55 FOOT ANCHOR
MASS	1000KG
ITEM NO/ID	

2 - 2.5T x 55 LONG SWIFTLIFT FOOT ANCHORS



**PLAN VIEW**

NOT ALL DETAILS SHOWN FOR CLARITY



**SECTION A**

NOT ALL DETAILS SHOWN FOR CLARITY

**NOTES:**

1. MANUFACTURED FROM MINIMUM N40 CONCRETE
2. REINFORCEMENT AS PER HCP STANDARD DESIGN
3. CONCRETE COVER & CONCRETE STRENGTH VARIES FOR SPECIFIC APPLICATIONS
4. ALL DIMENSIONS ARE SHOWN NOMINAL AND MAY VARY BETWEEN CASTING FACILITIES WITH DIFFERENCES IN MANUFACTURING MOULDS AND PRACTICES

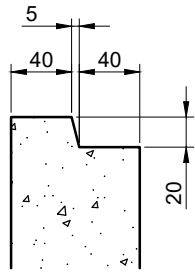
**DISCLAIMER:**  
 SHOP DRAWING ONLY, DESIGN BY OTHERS. SITE CONTRACTOR & INSTALLER MUST UNDERTAKE SITE & PROJECT SPECIFIC RISK ASSESSMENT/SWMS AROUND SAFE LIFTING & HANDLING OF PRODUCT

**CP23312 - STANDARD DN1200 x 1200  
 MANHOLE SHAFT**

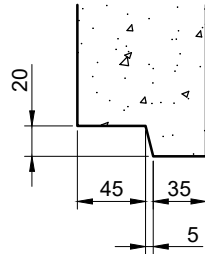
REV	AMENDMENTS	DRAWN	DATE	APPR.	NOTES	SCALE	PAPER
0	NEW PRODUCT DRAWING	M.R.	03/06/21	A.H.	STANDARD PRODUCT DRAWING	1:20	A4
						JOB NUMBER	DRAWING
					DRAWN M.R.	CHECKED A.H.	DATE 03 JUNE 2021
							FAC-MH1200-12C



**HUDSON**  
 CIVIL PRODUCTS



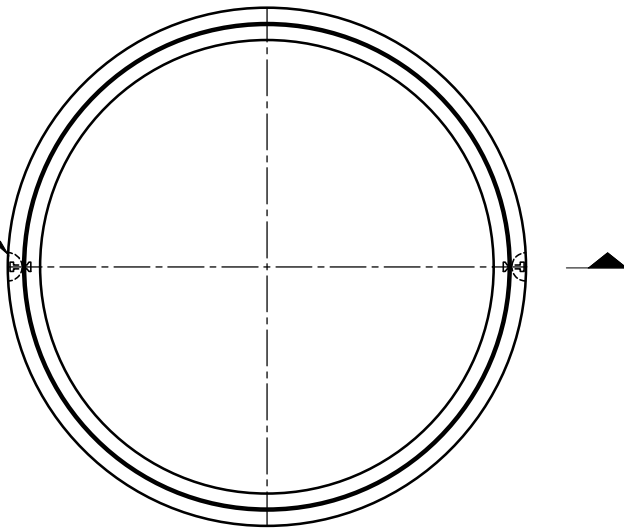
**TOP REBATE**  
SCALE 1:5



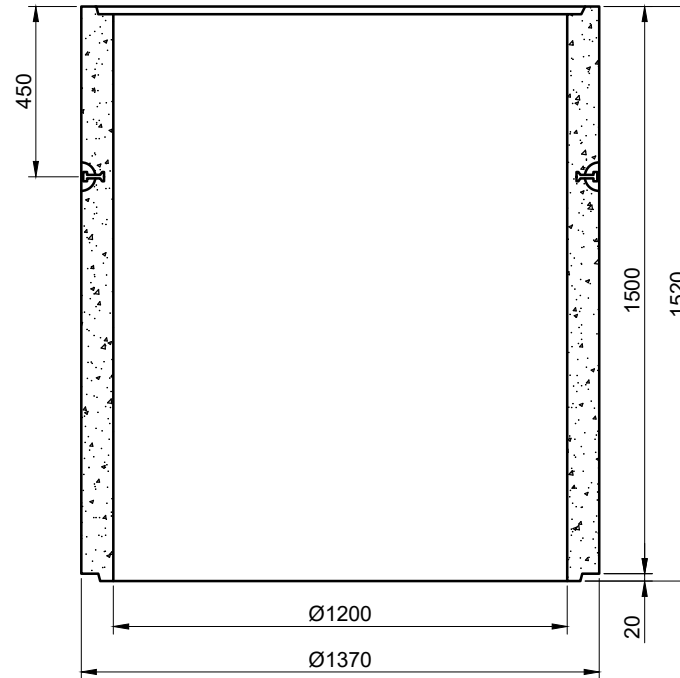
**BOTTOM REBATE**  
SCALE 1:5

INFORMATION TABLE	
CONCRETE TYPE	MINIMUM N40
CONCRETE VOLUME	0.50m <sup>3</sup>
CONCRETE COVER	30mm MINIMUM
LIFTER TYPE & QTY	2 - 2.5T x 55 FOOT ANCHOR
MASS	1250KG
ITEM NO/ID	

2 - 2.5T x 55 LONG SWIFTLIFT FOOT ANCHORS



**PLAN VIEW**  
NOT ALL DETAILS SHOWN FOR CLARITY



**SECTION A**  
NOT ALL DETAILS SHOWN FOR CLARITY

**NOTES:**

1. MANUFACTURED FROM MINIMUM N40 CONCRETE
2. REINFORCEMENT AS PER HCP STANDARD DESIGN
3. CONCRETE COVER & CONCRETE STRENGTH VARIES FOR SPECIFIC APPLICATIONS
4. ALL DIMENSIONS ARE SHOWN NOMINAL AND MAY VARY BETWEEN CASTING FACILITIES WITH DIFFERENCES IN MANUFACTURING MOULDS AND PRACTICES

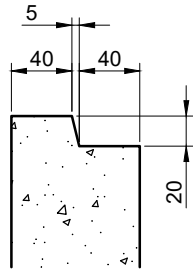
**DISCLAIMER:**  
SHOP DRAWING ONLY, DESIGN BY OTHERS. SITE CONTRACTOR & INSTALLER MUST UNDERTAKE SITE & PROJECT SPECIFIC RISK ASSESSMENT/SWMS AROUND SAFE LIFTING & HANDLING OF PRODUCT

**CP23315 - STANDARD DN1200 x 1500  
MANHOLE SHAFT**

REV	AMENDMENTS	DRAWN	DATE	APPR.	NOTES	SCALE	PAPER
0	NEW PRODUCT DRAWING	M.R.	03/06/21	A.H.	STANDARD PRODUCT DRAWING	1:20	A4
						JOB NUMBER	DRAWING
					DRAWN M.R.	CHECKED A.H.	DATE 03 JUNE 2021
							FAC-MH1200-15C



**HUDSON**  
CIVIL PRODUCTS

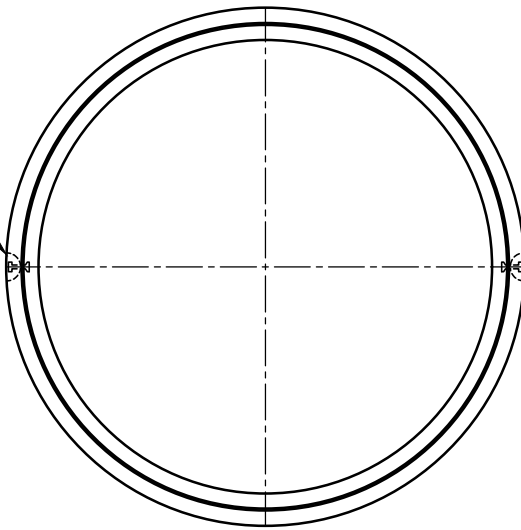


**TOP REBATE**

SCALE 1:5

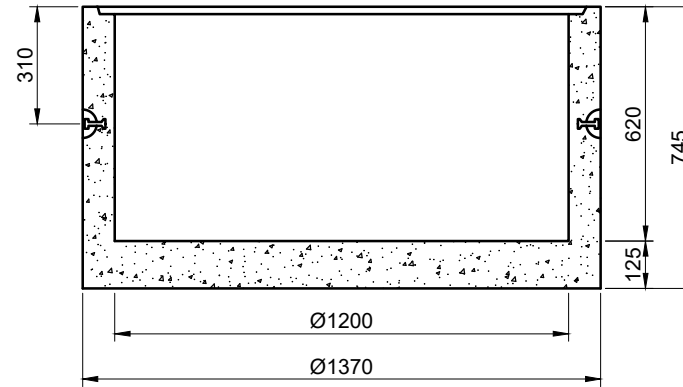
INFORMATION TABLE	
CONCRETE TYPE	MINIMUM N40
CONCRETE VOLUME	0.39m <sup>3</sup>
CONCRETE COVER	30mm MINIMUM
LIFTER TYPE & QTY	2 - 2.5T x 55 FOOT ANCHOR
MASS	975KG
ITEM NO/ID	

2 - 2.5T x 55 LONG SWIFTLIFT FOOT ANCHORS



**PLAN VIEW**

NOT ALL DETAILS SHOWN FOR CLARITY



**SECTION A**

NOT ALL DETAILS SHOWN FOR CLARITY

**NOTES:**

1. MANUFACTURED FROM MINIMUM N40 CONCRETE
2. REINFORCEMENT AS PER HCP STANDARD DESIGN
3. CONCRETE COVER & CONCRETE STRENGTH VARIES FOR SPECIFIC APPLICATIONS
4. ALL DIMENSIONS ARE SHOWN NOMINAL AND MAY VARY BETWEEN CASTING FACILITIES WITH DIFFERENCES IN MANUFACTURING MOULDS AND PRACTICES

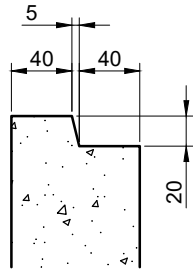
**DISCLAIMER:**  
 SHOP DRAWING ONLY, DESIGN BY OTHERS. SITE CONTRACTOR & INSTALLER MUST UNDERTAKE SITE & PROJECT SPECIFIC RISK ASSESSMENT/SWMS AROUND SAFE LIFTING & HANDLING OF PRODUCT

**CP23318 - STANDARD DN1200 x 600  
 MANHOLE BASE UNIT**

REV	AMENDMENTS	DRAWN	DATE	APPR.	NOTES	SCALE	PAPER
0	NEW PRODUCT DRAWING	M.R.	03/06/21	A.H.	STANDARD PRODUCT DRAWING	1:20	A4
						JOB NUMBER	DRAWING
					DRAWN M.R.	CHECKED A.H.	DATE 03 JUNE 2021
							FAC-MH1200-06CB



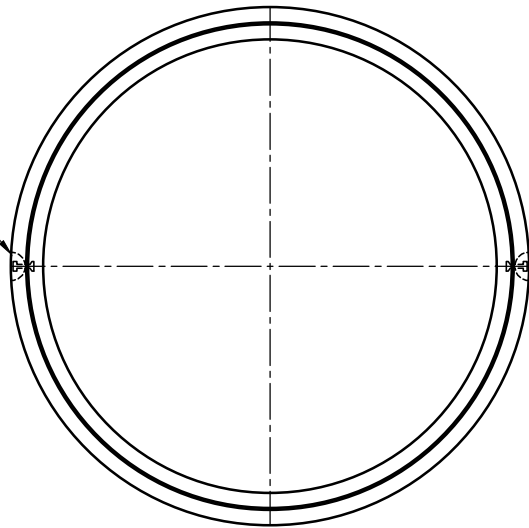
**HUDSON**  
 CIVIL PRODUCTS



**TOP REBATE**

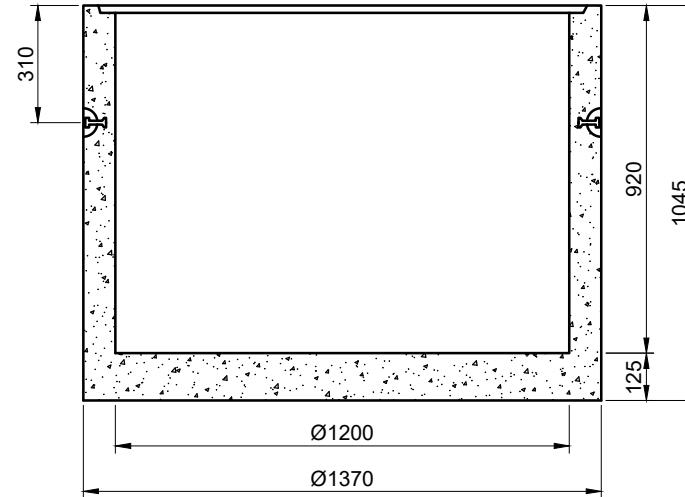
SCALE 1:5

2 - 2.5T x 55 LONG SWIFTLIFT FOOT ANCHORS



**PLAN VIEW**

NOT ALL DETAILS SHOWN FOR CLARITY



**SECTION A**

NOT ALL DETAILS SHOWN FOR CLARITY

**INFORMATION TABLE**

CONCRETE TYPE	MINIMUM N40
CONCRETE VOLUME	0.49m <sup>3</sup>
CONCRETE COVER	30mm MINIMUM
LIFTER TYPE & QTY	2 - 2.5T x 55 FOOT ANCHOR
MASS	1225KG
ITEM NO/ID	

**NOTES:**

1. MANUFACTURED FROM MINIMUM N40 CONCRETE
2. REINFORCEMENT AS PER HCP STANDARD DESIGN
3. CONCRETE COVER & CONCRETE STRENGTH VARIES FOR SPECIFIC APPLICATIONS
4. ALL DIMENSIONS ARE SHOWN NOMINAL AND MAY VARY BETWEEN CASTING FACILITIES WITH DIFFERENCES IN MANUFACTURING MOULDS AND PRACTICES

**DISCLAIMER:**

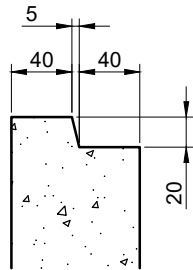
SHOP DRAWING ONLY, DESIGN BY OTHERS. SITE CONTRACTOR & INSTALLER MUST UNDERTAKE SITE & PROJECT SPECIFIC RISK ASSESSMENT/SWMS AROUND SAFE LIFTING & HANDLING OF PRODUCT

**CP23323 - STANDARD DN1200 x 900  
MANHOLE BASE UNIT**

REV	AMENDMENTS	DRAWN	DATE	APPR.	NOTES	SCALE	PAPER
0	NEW PRODUCT DRAWING	M.R.	03/06/21	A.H.	STANDARD PRODUCT DRAWING	1:20	A4
						JOB NUMBER	DRAWING
					DRAWN M.R.	CHECKED A.H.	DATE 03 JUNE 2021
							FAC-MH1200-09CB



**HUDSON**  
CIVIL PRODUCTS

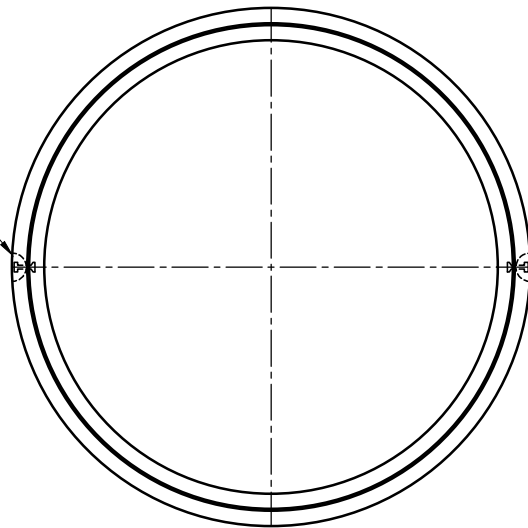


**TOP REBATE**

SCALE 1:5

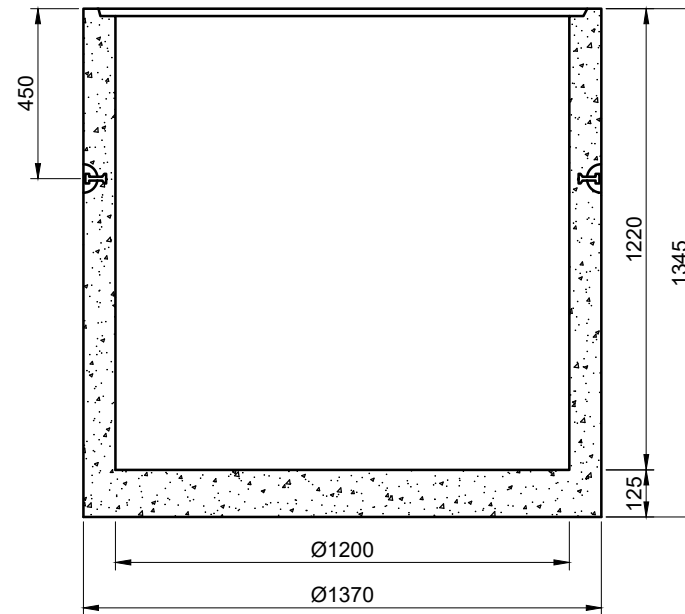
INFORMATION TABLE	
CONCRETE TYPE	MINIMUM N40
CONCRETE VOLUME	0.59m <sup>3</sup>
CONCRETE COVER	30mm MINIMUM
LIFTER TYPE & QTY	2 - 2.5T x 55 FOOT ANCHOR
MASS	1475KG
ITEM NO/ID	

2 - 2.5T x 55 LONG SWIFTLIFT FOOT ANCHORS



**PLAN VIEW**

NOT ALL DETAILS SHOWN FOR CLARITY



**SECTION A**

NOT ALL DETAILS SHOWN FOR CLARITY

**NOTES:**

1. MANUFACTURED FROM MINIMUM N40 CONCRETE
2. REINFORCEMENT AS PER HCP STANDARD DESIGN
3. CONCRETE COVER & CONCRETE STRENGTH VARIES FOR SPECIFIC APPLICATIONS
4. ALL DIMENSIONS ARE SHOWN NOMINAL AND MAY VARY BETWEEN CASTING FACILITIES WITH DIFFERENCES IN MANUFACTURING MOULDS AND PRACTICES

**DISCLAIMER:**  
 SHOP DRAWING ONLY, DESIGN BY OTHERS. SITE CONTRACTOR & INSTALLER MUST UNDERTAKE SITE & PROJECT SPECIFIC RISK ASSESSMENT/SWMS AROUND SAFE LIFTING & HANDLING OF PRODUCT

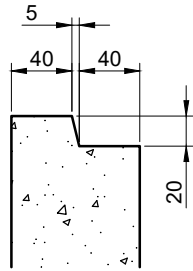
**CP23326 - STANDARD DN1200 x 1200  
 MANHOLE BASE UNIT**

REV	AMENDMENTS	DRAWN	DATE	APPR.	NOTES	SCALE	PAPER
0	NEW PRODUCT DRAWING	M.R.	03/06/21	A.H.	STANDARD PRODUCT DRAWING	1:20	A4
						JOB NUMBER	DRAWING
					DRAWN	CHECKED	DATE
		M.R.	A.H.	20 JUNE 2021	FAC-MH1200-12CB		



**HUDSON**  
 CIVIL PRODUCTS

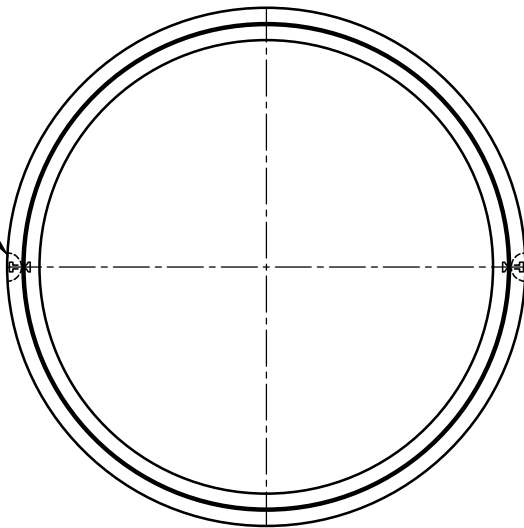




**TOP REBATE**

SCALE 1:5

2 - 2.5T x 55 LONG SWIFTLIFT FOOT ANCHORS



**PLAN VIEW**

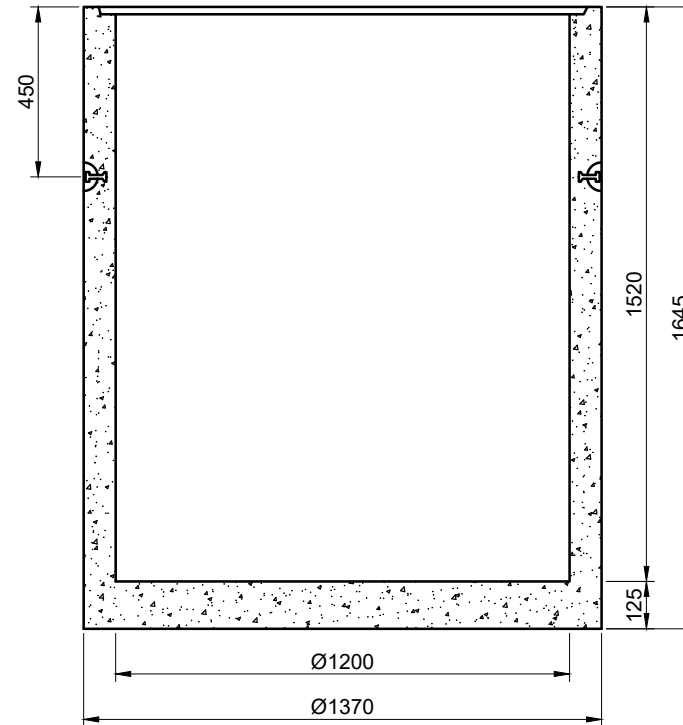
NOT ALL DETAILS SHOWN FOR CLARITY

**NOTES:**

1. MANUFACTURED FROM MINIMUM N40 CONCRETE
2. REINFORCEMENT AS PER HCP STANDARD DESIGN
3. CONCRETE COVER & CONCRETE STRENGTH VARIES FOR SPECIFIC APPLICATIONS
4. ALL DIMENSIONS ARE SHOWN NOMINAL AND MAY VARY BETWEEN CASTING FACILITIES WITH DIFFERENCES IN MANUFACTURING MOULDS AND PRACTICES

**INFORMATION TABLE**

CONCRETE TYPE	MINIMUM N40
CONCRETE VOLUME	0.69m <sup>3</sup>
CONCRETE COVER	30mm MINIMUM
LIFTER TYPE & QTY	2 - 2.5T x 55 FOOT ANCHOR
MASS	1725KG
ITEM NO/ID	



**SECTION A**

NOT ALL DETAILS SHOWN FOR CLARITY

**DISCLAIMER:**  
 SHOP DRAWING ONLY, DESIGN BY OTHERS. SITE CONTRACTOR & INSTALLER MUST UNDERTAKE SITE & PROJECT SPECIFIC RISK ASSESSMENT/SWMS AROUND SAFE LIFTING & HANDLING OF PRODUCT

**CP23329 - STANDARD DN1200 x 1500  
 MANHOLE BASE UNIT**

REV	AMENDMENTS	DRAWN	DATE	APPR.	NOTES	SCALE	PAPER
0	NEW PRODUCT DRAWING	M.R.	03/06/21	A.H.		1:20	A4
						JOB NUMBER	DRAWING
						FAC-MH1200-15CB	

STANDARD PRODUCT DRAWING  
 M.R. A.H. DATE 20 JUNE 2021



**HUDSON**  
 CIVIL PRODUCTS