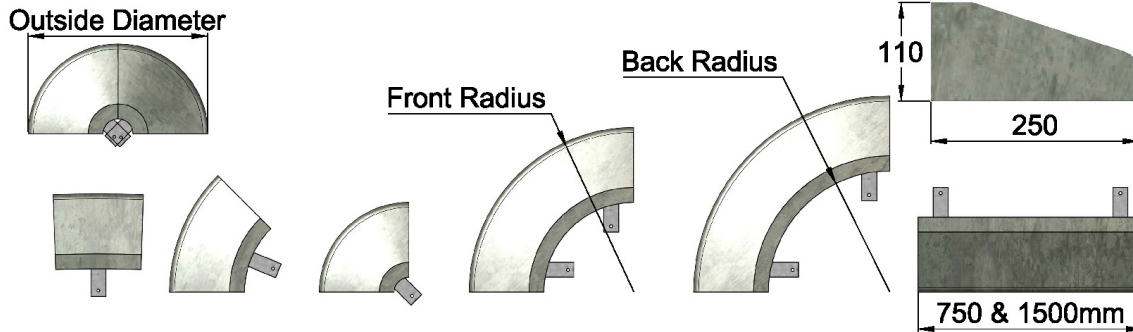




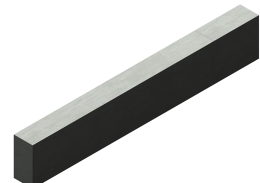
## Kerb Blocks



| CODE  | DESCRIPTION<br>(Low profile kerbs) | RADIUS mm        |      | OUTSIDE<br>DIAMETER |
|-------|------------------------------------|------------------|------|---------------------|
|       |                                    | FRONT            | BACK |                     |
| DC465 | KERB - Island L/P 300mm            | 5000             | 4750 | 10000               |
| DC470 | KERB-Island L/P 45D Large          | 530              | 280  | 1060                |
| DC475 | KERB-Island L/P 90D Small          | 300              | 50   | 600                 |
| DC480 | KERB-Island L/P 90D Med            | 560              | 310  | 1120                |
| DC485 | KERB-Island L/P 90D Large          | 700              | 450  | 1400                |
| DC455 | KERB - Island L/P 1500mm           | Straight section |      |                     |
| DC460 | KERB - Island L/P 750mm            | Straight section |      |                     |



DC450



DC520

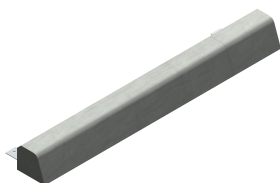


DC525

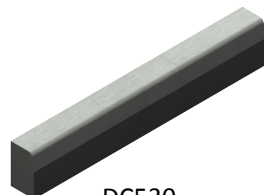


DC526

| CODE  | DESCRIPTION              | BLOCK DIMENSIONS mm |        |        |
|-------|--------------------------|---------------------|--------|--------|
|       |                          | Width               | Height | Length |
| DC450 | KERB - Island H/P 1500mm | 230                 | 160    | 1500   |
| DC520 | KERB - Island E1 1200mm  | 100                 | 200    | 1200   |
| DC525 | KERB - Island M2 750mm   | 305                 | 270    | 750    |
| DC526 | KERB - Island M3 750mm   | 305                 | 110    | 750    |
| DC527 | KERB - Island B3         | 140                 | 115    | 1200   |
| DC530 | KERB - Island B2 1500mm  | 150                 | 250    | 1500   |
| DC600 | EDGE STRIP-Boundary 1.2m | 150                 | 90     | 1200   |



DC527



DC530



DC600